


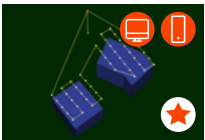


# Features and functionalities

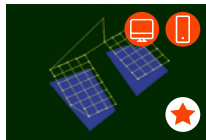
Available on  Web App  Mobile App  
Available with  Drone Harmony Free License \*

## Flight Plans

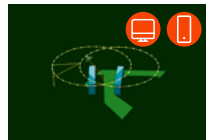
### Mapping



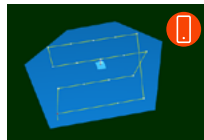
Top-Down



Multi-Grid

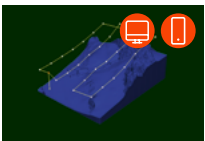


Mapping Orbits

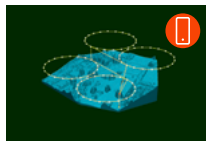


Top-Down Sampling

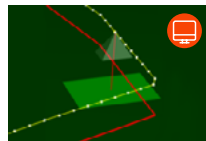
### Terrain



Terrain Map

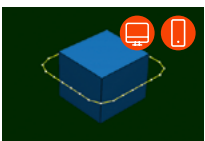


Terrain Orbits

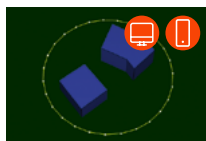


Terrain Line

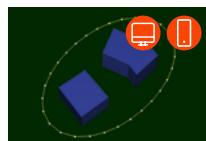
### Perimeter



Perimeter



Circle

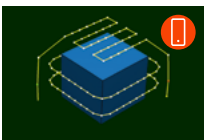


Ellipse

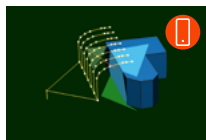


Convex Hull

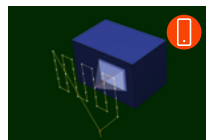
### Inspection



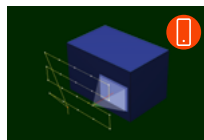
Site



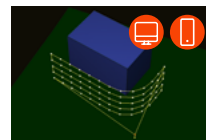
Facade Inspection



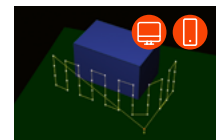
Facade Vertical Line Scan



Facade Horizontal Line Scan



Perimeter Horizontals

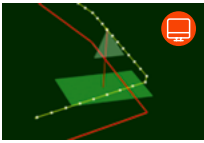


Perimeter Verticals

\* All the other features are available with the licenses "Starter" and "Professional".

---

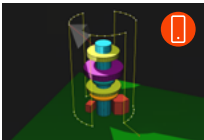
## Linear



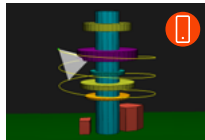
Simple Linear  
Scan

---

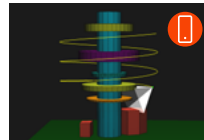
## Cell Tower Plans



Tower Verticals



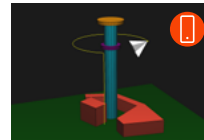
Upwards Helix



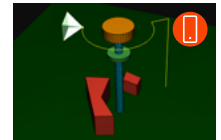
Downwards  
Helix



Dome Orbits



Simple Orbit



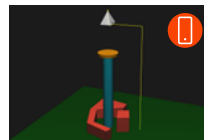
Simple Panorama  
Orbit



Antenna Orbits



Antenna  
Panorama Orbits



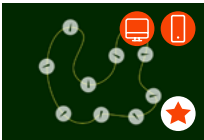
Above Tower  
Nadir



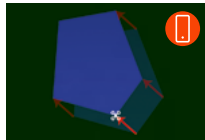
Helix Up & Helix  
Down with Circles

---

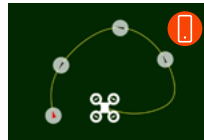
## Manual



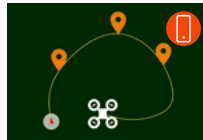
Manual WPs



Calibrate Position



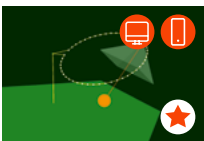
Record Mission



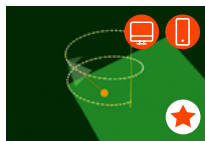
Record POIs

---

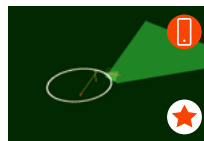
## Shapes



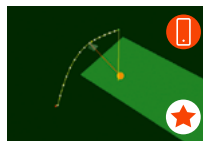
Orbit



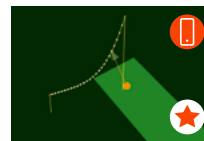
Helix



Panoramic Orbit



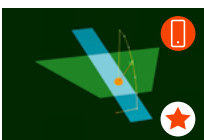
Parabolic Reveal



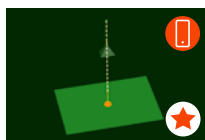
Parabolic  
Reverse Reveal



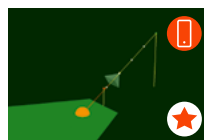
Horizontal  
Parabolic Reveal



Flatland  
(Droneception)  
Photos



Rocket Quick  
Shot



Zoom-Out Quick  
Shot

# Import / Export Options




---

## Import

-  Terrain files (GeoTiff format \*.tif)
-  Terrain files (ESRI Ascii Grid format \*.asc)
-  Drone Harmony State Files (\*.dhm)
-  Geo-Shapes (\*.kml/kmz) – Flat Areas & Lines
-  Geo-Shapes (\*.kml/kmz) – Line as mission
-  Geo-Shapes (\*.kml/kmz) – Surface with elevations


---

## Export

-  Drone Harmony State Files (\*.dhm)
-  Mission as waypoints (\*.csv)
-  Flight Logs (\*.zip)



---

## Automated Flight Execution

-  Most DJI Drones. Please refer to our [Supported Hard- and Software Document](#) for a comprehensive overview.

---

## Cloud

-  Drone Harmony State Synchronization
-  Terrain data storage

---

**PLEASE CONTACT US FOR  
MORE DETAILED INFORMATION**

contact@droneharmony.com  
droneharmony.com

